

PUREDRIVE
ENERGY STORAGE

PureStorage Installer's Guide

PUREDRIVE
ENERGY STORAGE

PUREDRIVE
ENERGY STORAGE

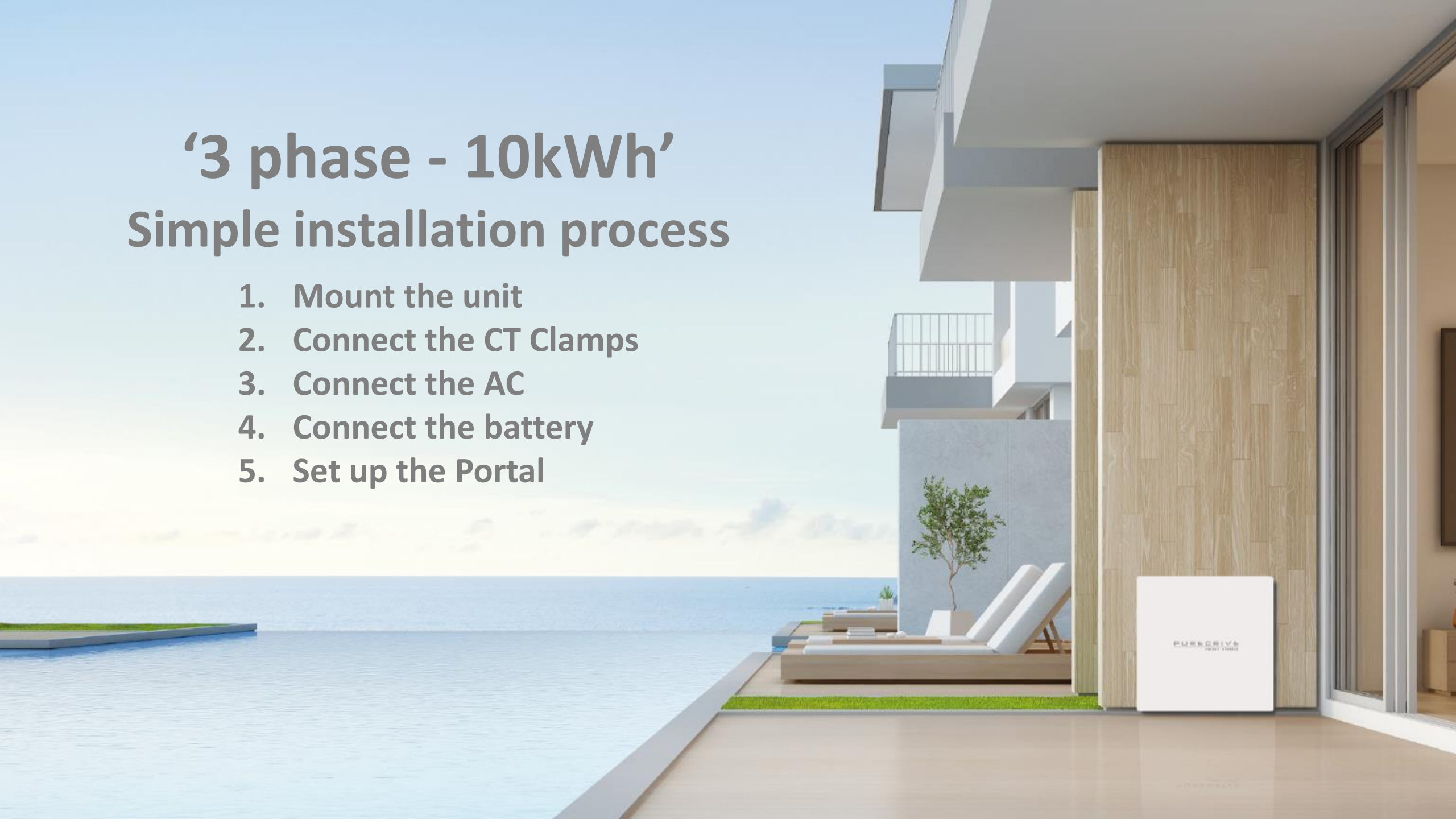
PUREDRIVE
ENERGY STORAGE



'3 phase - 10kWh'

Simple installation process

1. Mount the unit
2. Connect the CT Clamps
3. Connect the AC
4. Connect the battery
5. Set up the Portal



1. Mount the Unit (Floor)

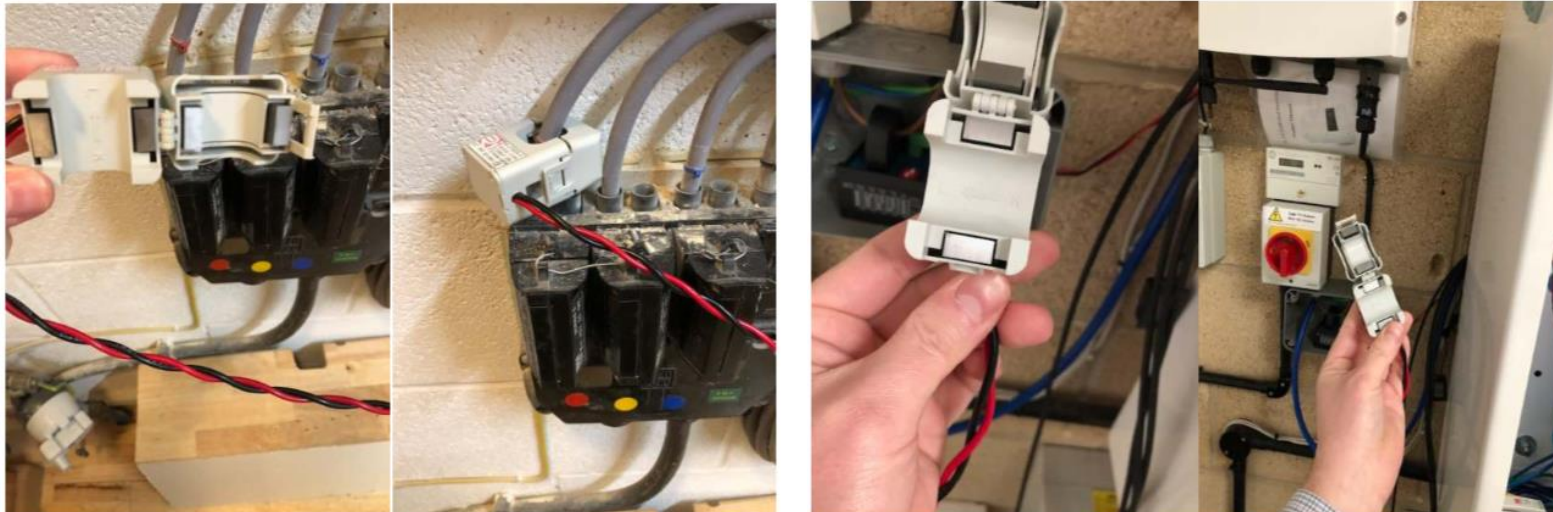
- a) The box has two pre-drilled holes in the back plate for mounting against a wall.
- b) Position the enclosure and fit against a wall with the relevant screws

2. Connect the CT Clamps

There are 6 off CT clamps

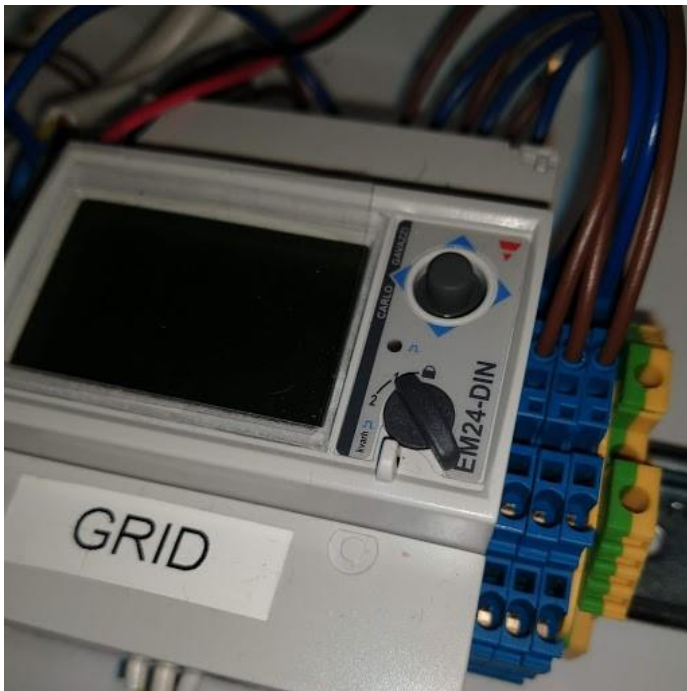
- Three must be installed between the distribution board and the Public Grid on each phase
- Three must be installed between the distribution board and the solar PV inverter on each phase.

The Arrow must follow the flow of energy – i.e. toward the distribution board.



3. Connect CT Clamps To The Meter via the terminal rail.

GRID



L1,L2,L3

- a)
Connect the
grid CT clamps
in the sequence
shown, L1,
L2,L3.
Red is +ve,
Black is -ve,

SOLAR

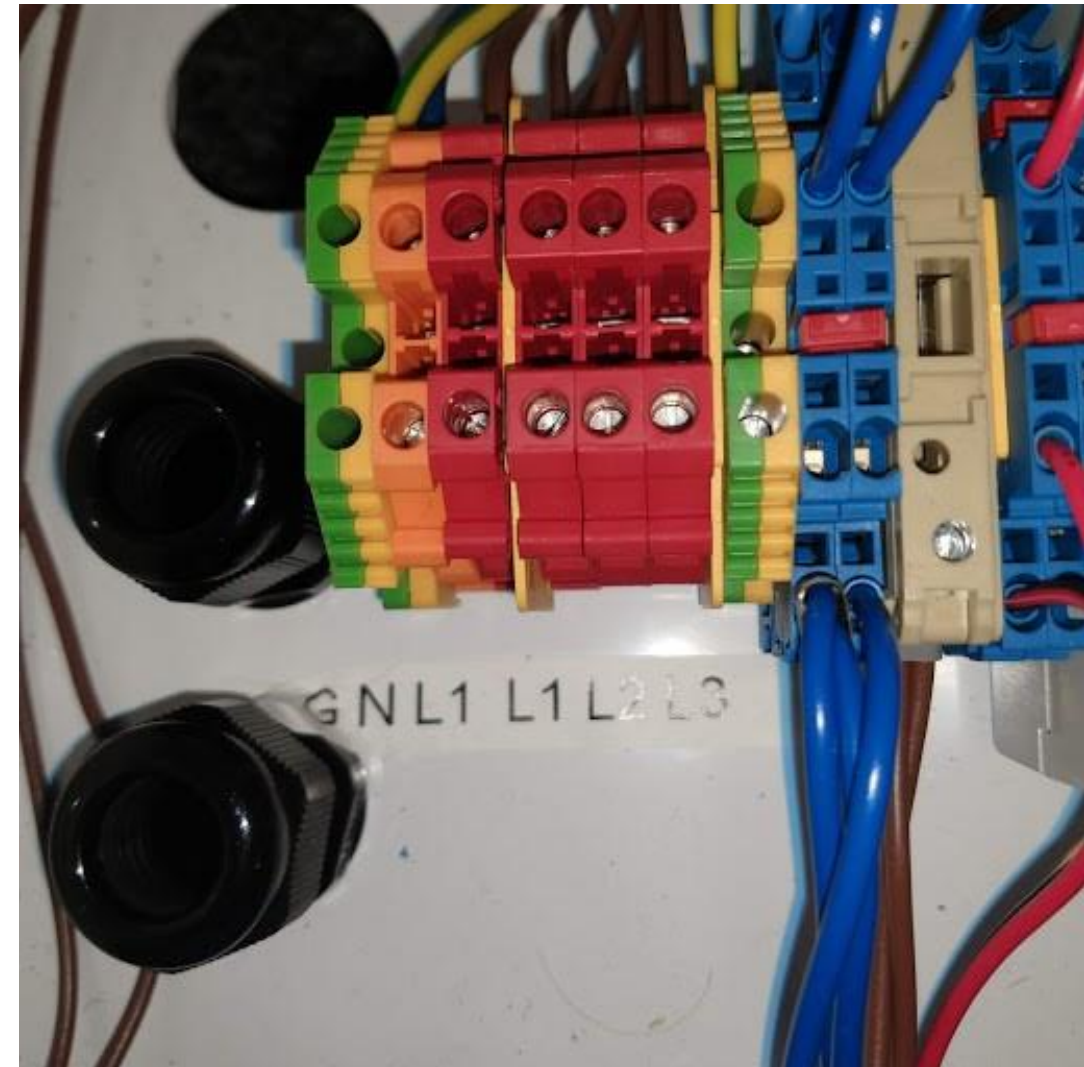


L1,L2,L3

- a)
Connect the
solar CT clamps
in the sequence
shown, L1,
L2,L3.
Red is +ve,
Black is -ve,

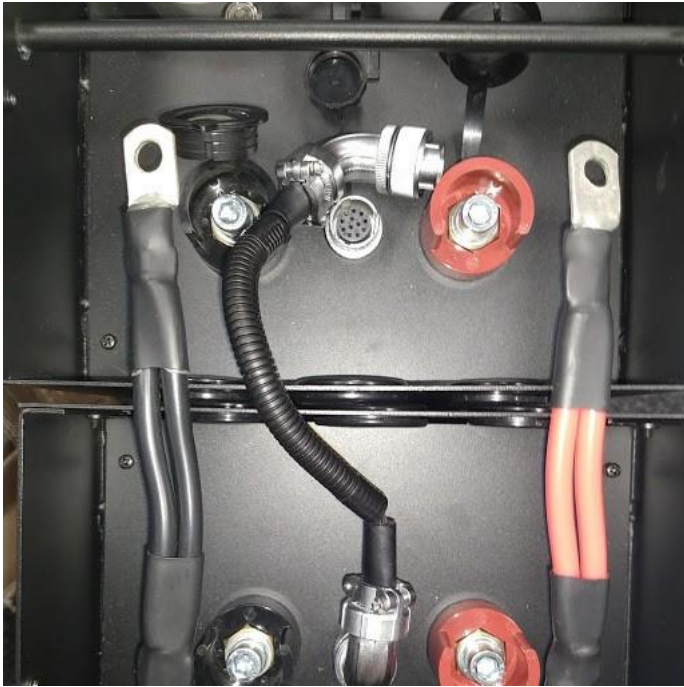
4. Connect the AC from L1 & reference signals from 3 phases

- Make an AC connection to a spare way in the distribution board from L1 and protect with 16 amp MCB. Then connect to the AC IN (G,N,L1) as shown.
- Take a reference signal from each phase through a 1 amp MCB and connect to L1, L2 & L3 as shown.



Be sure to isolate the power before connecting

5. Install and connect the battery



- a) Position the 2 off batteries inside the enclosure, with battery A closer to the inverter. Connect the batteries together with the cables provided.
- b) Connect the communication cable between the two off batteries.

c) Connect the battery to the inverter with the Anderson connector as shown.



5. Install and connect the battery

- b) Now connect the RJ45 communication cable between VeCan port on the control panel and the port on the battery.

** Battery will switch off after 10 mins if communication is lost.*



6. Set up the Portal

To do this you must be within two metres of the Puredrive System

Before you start you will need the following information

1

VRM ID Number

2

Wi-Fi Key Password

Once you have this information from your installer follow these steps to set up your system.

1

Open the WIFI setting on your device and search for Venus (your VRM ID Number)

2

Select that connection and enter the Wi-Fi key (password)

3

It will come up as connected but no internet access this is OK

4

Open your Web Browser and enter Address 172.24.24.1 in the Address Bar.

5

The Remote Console for the System will Appear showing Real Time Condition of the System



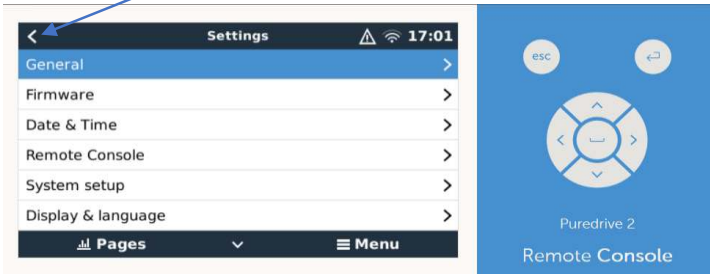
The diagram on the left shows the energy flow: Grid (700W) and PV Inverter (0W) feed into AC Loads (696W). A Bulk unit (0W) is connected to the AC Loads and Critical Loads (0W). Below the Bulk unit is a battery pack showing 20% charge (51.2V, 0.0A) and ESS #1. To the right is the Puredrive 2 Remote Console interface, which features a blue background with a central circular navigation pad and 'esc' and 'enter' buttons at the top.

1

Press the Back Arrow on top of the Screen until it does not appear, then press escape key the remote console appears.

2

The Control keys may appear in a different pattern on your device



The screenshot shows a 'Settings' menu with a back arrow at the top left. A blue arrow points to the back arrow with the text 'Press Back until Device List Appears'. The menu items are: General, Firmware, Date & Time, Remote Console, System setup, and Display & language. At the bottom are 'Pages' and 'Menu' buttons. To the right of the menu is a blue panel with a circular navigation pad and 'esc' and 'enter' buttons, labeled 'Puredrive 2 Remote Console'.

3

Then Press the return key, the **DEVICE LIST** menu appears.

4

Go to **Setting** and press Enter.

5

In the **SETTING** Menu move down the list to **Wi-Fi**, Press Enter.

6

In the **Wi-Fi** Menu go to **Wi-Fi networks**.

7

Select your Network and enter your network pass key

You should now have the Puredrive Energy Storage System Connected to Your Network.



+44 (0)1684 851205



www.puredrive-energy.co.uk



sales@puredrive-energy.co.uk



Puredrive Energy Ltd
Unit 4 Basepoint Business Centre
Oakfield Close
Gloucestershire
GL20 8SD

Puredrive Energy are the battery brains of Britain. They have a great product and we're glad to be partners with such a fantastic company. I am looking forward to a greener future together.

Bradley Raphael – Manager Edmundson Greentech

